

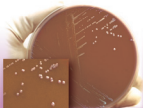


anthrax

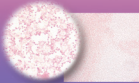


Bacillus anthracis

- Large, gram positive, spore forming bacilli
- Non-hemolytic
- Non-motile
- Sticky, adheres to agar surface
- Catalase positive

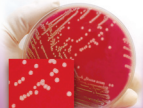


tularemia

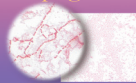


Francisella tularensis

- Poorly staining, tiny gram negative coccobacilli
- Slow growing, requires cysteine
- Oxidase negative
- Urea negative
- Nitrate negative

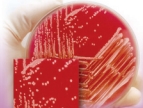


plague



Yersinia pestis

- Bipolar, "safety-pin" gram negative bacilli
- Slow growing
- Lactose negative
- Oxidase negative
- Urea negative



brucellosis



Brucella species

- Poorly staining, tiny gram negative coccobacilli
- Slow growing
- Oxidase positive
- Nitrate positive
- Urea positive

# BIOTERRORISM

Recognize the agents of bioterrorism  
You are the first line of defense

Call the Illinois Department of Public Health  
Carbondale Laboratory Chicago Laboratory Springfield Laboratory  
618-457-5131 312-793-4760 217-782-6562

AFTER REGULAR HOURS CALL 217-782-7860 or 800-782-7860



ILLINOIS DEPARTMENT  
OF PUBLIC HEALTH

ILLINOIS DEPARTMENT OF PUBLIC HEALTH  
1000 EAST WASHINGTON STREET  
SPRINGFIELD, ILLINOIS 62762