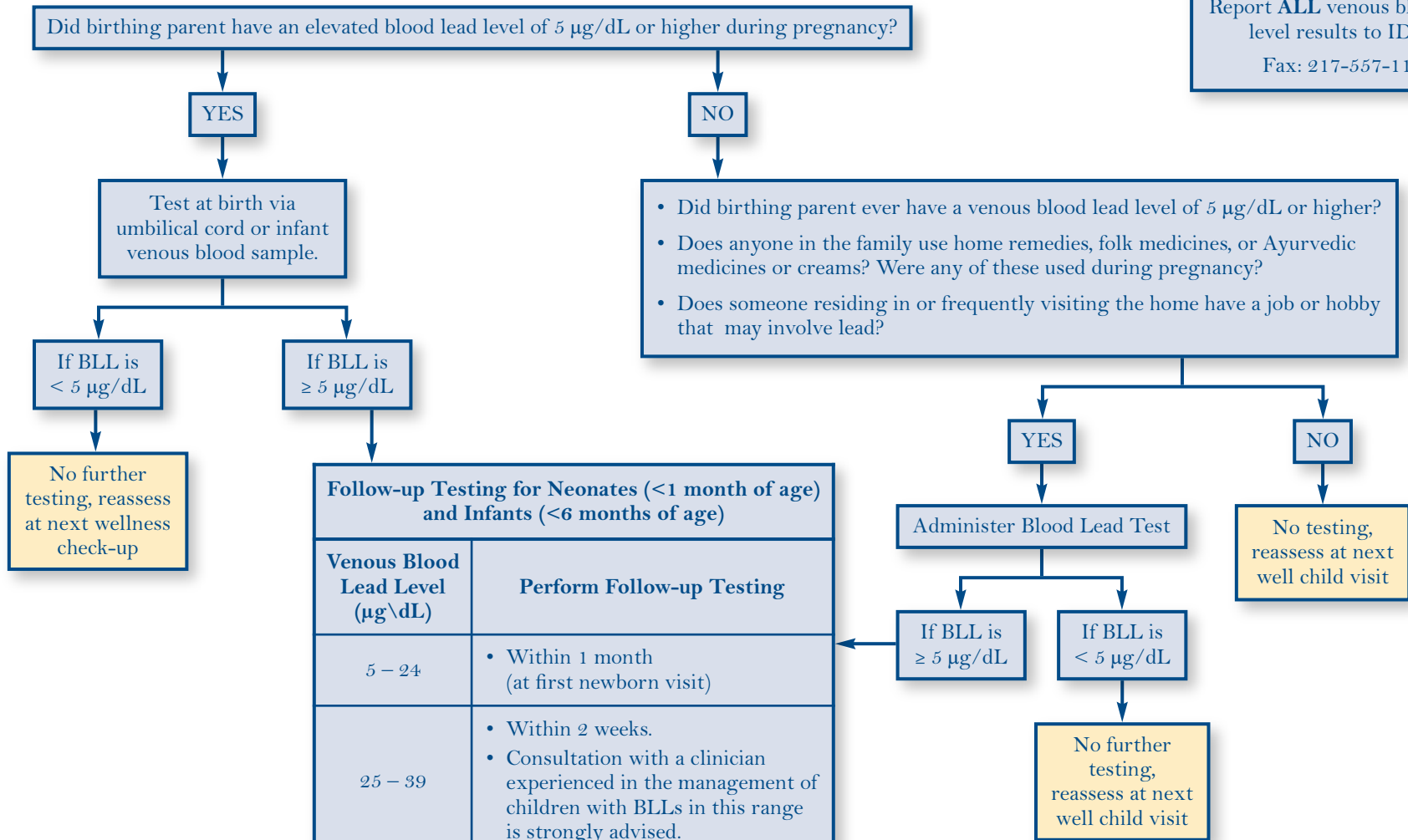




Infant and Neonate Evaluation & Testing Algorithm

Report ALL venous blood lead level results to IDPH.
Fax: 217-557-1188



Follow-up Testing for Neonates (<1 month of age) and Infants (<6 months of age)	
Venous Blood Lead Level (µg/dL)	Perform Follow-up Testing
5 – 24	<ul style="list-style-type: none"> • Within 1 month (at first newborn visit)
25 – 39	<ul style="list-style-type: none"> • Within 2 weeks. • Consultation with a clinician experienced in the management of children with BLLs in this range is strongly advised.
≥ 40	<ul style="list-style-type: none"> • Within 24 hours, then frequent intervals depending on clinical intervention and trend blood lead levels • Prompt consultation with a clinician experienced in management of children with BLLs in this range is strongly advised.

All confirmed venous blood lead levels of ≥5 µg/dL will receive case management services from IDPH.