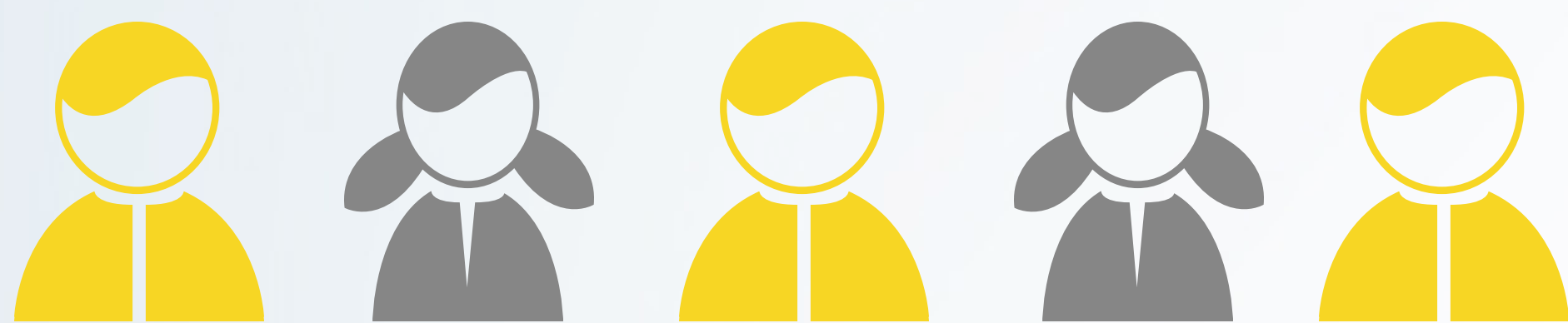


Childhood & Adolescent Cancers in Illinois

Childhood cancers are cancers diagnosed between the ages of 0 & 14. Adolescent cancers are those diagnosed between 15 & 19 years of age.

They are rare, and make up less than 1% of all new cancer diagnoses.

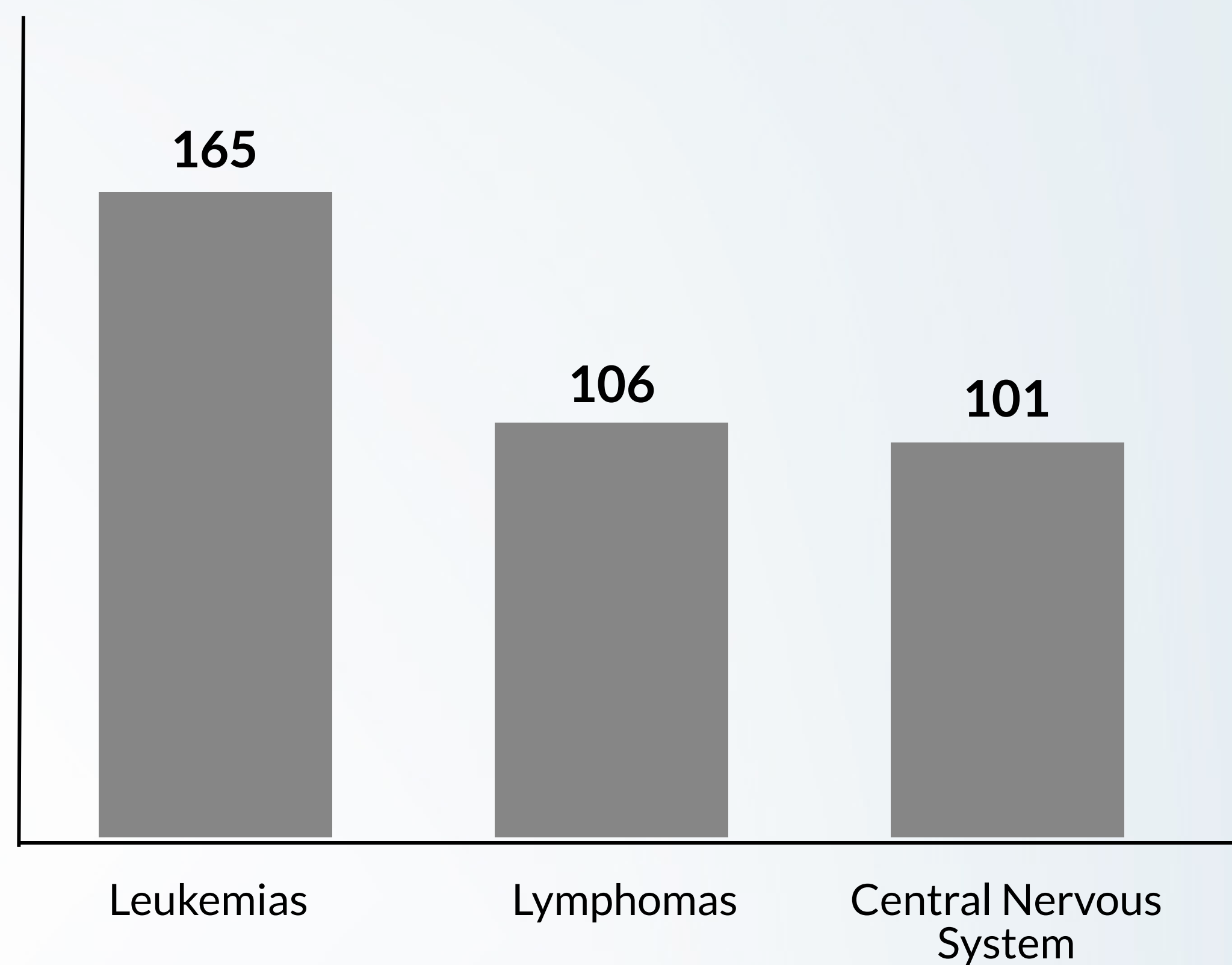


~630 Children will be diagnosed with cancer in Illinois each year

80% Of children diagnosed with cancer survive 5+ years (national data)

70% Of survivors will experience long-term side-effects from treatment

Most Common Childhood Cancers



Leukemias Cancers that start in the tissues that make the blood (e.g. bone marrow) and produce abnormal blood cells

Lymphomas Cancers that begin in the immune system. There are two basic types: Hodgkin and Non-Hodgkin Lymphomas.

Central Nervous System Cancers that begin in the brain or spinal cord

Risk Factors



80-90% of pediatric tumors do not have a known cause



Personal or Family History of Cancer



Hereditary Cancer Syndrome



Congenital Malformations

SOURCES:

Illinois Department of Public Health, Illinois Cancer Registry, public data file, data as of November 2018. All incidence data are specific to Illinois and from 2012-2016 combined. National Cancer Institute, Cancer in Children and Adolescents
The Illinois State Cancer Registry receives support from the National Program of Cancer Registries, Centers for Disease Control and Prevention under cooperative agreement 6 NU58DP006315-03-01 and from the State of Illinois. The findings and conclusions are those of the Illinois State Cancer Registry and do not necessarily represent the official position of the Centers for Disease Control and Prevention.